

# BASS DREAM OF A DREAM

♩ = 160

6/4  $F\Delta\#11$  sim.....  $E_m11$

BROKEN/ SWUNG FEEL

5  $Bb\Delta\#11$   $C\Delta$   $F\#m11$

10 **(A)**  $A_m7$   $F\Delta\#11$  sim.....  $E_m11$   $G7sus4$

14  $Bb\Delta\#11$   $C\Delta$   $G\Delta/B$   $Bb\Delta\#11$

18 **(B)**  $F\Delta\#11$   $E_m11$

22  $Bb\Delta\#11$   $C\Delta$

25  $F\#m7$

BASS

2

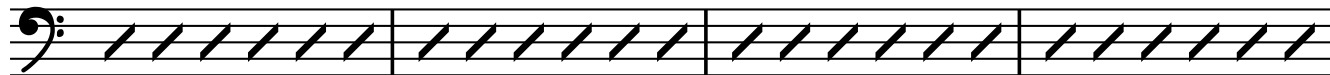
29 **C** Am7

FΔ#11

BASS

Em11

G7sus4



33 BbΔ#11

CΔ

GΔ/B

BbΔ#11



ON CUE **GUITAR SOLO**

37 **D** Am7

FΔ#11

Em7

G7sus4



41 BbΔ#11

CΔ

GΔ/B

BbΔ#11



45 Am7

FΔ#11

Em7

G7sus4

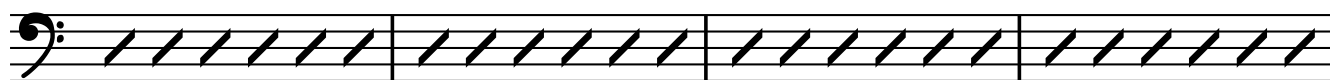


49 BbΔ#11

CΔ

GΔ/B

BbΔ#11



53 FΔ#11

Em11



57 BbΔ#11

CΔ



SAX SOLO

BASS

60

**E** C#m7

60 **E** C#m7

64 F#m7

64 F#m7

68 Dm7

68 Dm7

72 Dm7

72 Dm7

MELODY

76

**F** Am7

FΔ#11  
sim.....

Em11

G7sus4

76 **F** Am7 FΔ#11 Em11 G7sus4

80 BbΔ#11

CΔ

GΔ/B

BbΔ#1

80 BbΔ#11 CΔ GΔ/B BbΔ#1

84

**G** FΔ#11

Em11

84 **G** FΔ#11 Em11

SWING

88

BbΔ#11

CΔ

88 BbΔ#11 CΔ

4

# BASS

91 F#m7

6/4

A bass staff with a 6/4 time signature. The staff contains four measures of rhythmic slashes, indicating a consistent rhythmic pattern throughout the section.

95 (H) Am7 FΔ#11 Em11 G7sus4

A bass staff with four measures of rhythmic slashes, continuing the rhythmic pattern from the previous staff.

99 BbΔ#11 CΔ GΔ/B BbΔ#11

A bass staff with four measures of rhythmic slashes. The final measure contains a diamond symbol (◊) on the staff line, indicating a specific rhythmic or articulation mark.